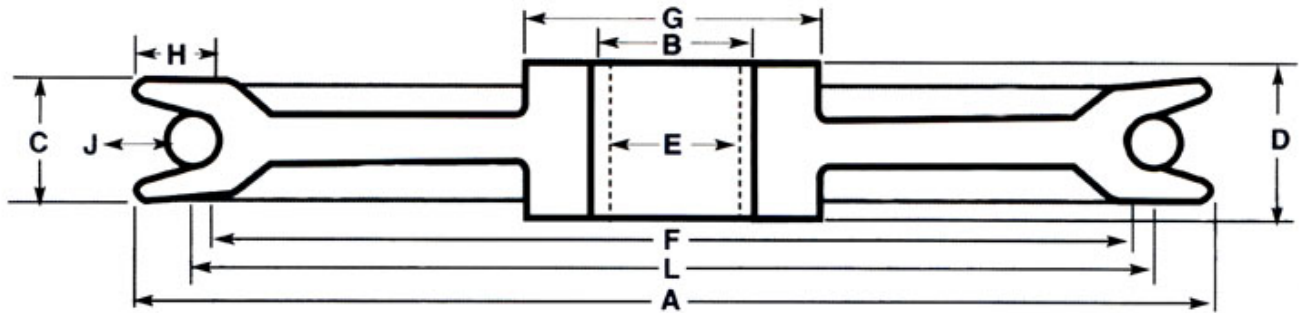


Choose from our selection chart or we can manufacture your sheaves to your design and specifications

Stock #	A	F	C	D	J
S-4-EBS	4	3 1/8	7/8	1	1/4, 3/8, 1/2
S-4-GBS	4	3 1/8	3/4	3/4	1/4, 3/8, 1/2
S-4-WBS	4	3/8	1 1/8	1 1/4	1/4, 3/8, 1/2
S-5-AMP	5	4	1 1/8	1 1/4	1/4, 3/8, 1/2
S-5-MMP	5	4	7/8	1	1/4, 3/8, 1/2
S-5-ZMP	5	3 3/4	1	1	1/4, 3/8, 1/2
S-6-AMP	6	4 3/4	1	1 1/8	1/4, 3/8, 1/2
S-6-LMP	6	4 3/4	1	1	1/4, 3/8, 1/2
S-6-AFMP	6	4 1/2	1 1/8	1 3/8	5/8
SB-8-MP	8	6 1/4	1 to 1 3/4	1 1/8 - up	VARIOUS DIA.S
S-8-ACF	8	6 1/4	1 1/4 to 1 5/8	1 3/8 - up	1/4, 3/8, 5/8, 3/4, 7/8
SB-10-MP	10	6 3/4 to 9	1 to 1 3/4	1 1/4 - up	VARIOUS DIA.S
S-10-ACF	10	8 1/4	1 1/4 to 1 3/4	1 3/8 - up	1/4, 3/8, 5/8, 3/4, 7/8
SB-12-MP	12	8 1/4 to 11	1 1/8 to 2 1/2	1 1/4 - up	VARIOUS DIA.S
S-12-ACF	12	10 1/4	1 1/4 to 1 3/4	1 3/8 - up	3/8, 1/2, 5/8, 7/8, 1
SB-14-MP	14	10 1/4 to 13 1/4	1 1/4 to 2 1/2	1 1/4 - up	VARIOUS DIA.S
S-14-ACF	14	12	1 1/4 to 1 3/4	1 3/8 - up	3/8, 1/2, 5/8, 7/8, 1
SB-16-MP	16	12 1/4 to 14 3/4	1 1/4 to 2 1/4	1 3/8 - up	VARIOUS DIA.S
S-16-ACF	16	13 1/4	1 3/8 to 1 3/4	1 1/2 - up	3/8, 1/2, 5/8, 7/8, 1
SB-18-MP	18	14 1/4 to 16 1/2	1 1/4 to 2 1/2	1 3/8 - up	VARIOUS DIA.S
SB-20-MP	20	16 1/4 to 18 1/2	1 1/4 to 2 1/4	1 3/8 - up	VARIOUS DIA.S
SB-24-MP	24	19 1/2 to 22 1/8	1 1/4 to 2	1 3/8 - up	VARIOUS DIA.S
SB-26-MP	26	12 1/4 to 24 1/2	1 1/4 to 2 1/2	1 3/8 - up	VARIOUS DIA.S
SB-30-MP	30	25 1/2 to 28 1/2	1 1/4 to 2 3/4	1 3/8 - up	VARIOUS DIA.S
SB-36-MP	36	31 1/2 to 34 1/2	1 1/4 to 2 3/4	1 3/8 - up	VARIOUS DIA.S



A - OUTSIDE DIAMETER

B - FINISHED BORE

C - RIM WIDTH

D - HUB WIDTH

E - SHAFT SIZE

F - GROOVE DIAMETER

G - HUB DIAMETER

J - ROPE SIZE

H - GROOVE DEPTH

L - PITCH DIAMETER

SELECTING FROM OUR SELECTION CHART OFFERS YOU QUICKER DELIVERY AND COST SAVINGS

We can stock for your ongoing requirements. Progressively we will be adding more stock sizes.
Contact us for more information on additions to this chart.

Due to our constant effort to improve and develop, all sheave dimensions and specifications are subject to change without notice.

Toll Free 1-888-561-9440 | Phone (905) 561-9440 | Fax (905) 561-8932

Email: info@canbearequipment.com